

SKYTOWER

MOBILE, MODULAR SENSOR PLATFORM

THEMAX AB

MOBILE SECURITY PLATFORM

SKYTOWER IS A MOBILE SOLUTION DESIGNED TO RAPIDLY DELIVER SURVEILLANCE CAPABILITIES IN AREAS WHERE SECURITY INFRASTRUCTURE IS NORMALLY UNAVAILABLE.

- **FLEXIBLE DEPLOYMENT:** TRAILER-BASED SYSTEM TOWABLE BY A STANDARD VEHICLE, OR BOX-BASED SYSTEM DELIVERABLE VIA CRANE TRUCK.
- **VERSATILE POWER OPTIONS:** PROPRIETARY ENERGY SETUP TAILORED TO CUSTOMER REQUIREMENTS—BATTERIES, GENERATOR, SOLAR PANELS, OR 230V GRID POWER.
- **EXTENDED COVERAGE:** 5-METER TELESCOPIC MAST FOR INCREASED SENSOR RANGE.
- **CUSTOMIZABLE CONFIGURATION:** FULLY EQUIPPED ACCORDING TO CUSTOMER NEEDS, REQUIREMENTS, AND SITE CONDITIONS.

MOBIL SECURITY PLATFORM



EASY TO TRANSPORT — FAST INSTALLATION AND COMMISSIONING

A SINGLE TECHNICIAN CAN QUICKLY TRANSPORT AND DEPLOY THE PLATFORM.

SECURE DESIGN

ALL EQUIPMENT, EXCEPT THE SOLAR PANELS, IS STORED IN A LOCKED ENCLOSURE AND FULLY PROTECTED AGAINST UNAUTHORIZED ACCESS.

SEAMLESS INTEGRATION

ALL SENSORS ARE MANAGED DIRECTLY FROM THE CUSTOMER'S EXISTING SOC.



CAPABILITIES

SKYTOWER IS EQUIPPED ACCORDING TO CUSTOMER REQUIREMENTS. EXAMPLES OF CAPABILITIES:

- CCTV CONNECTED TO SOC, ENABLING AI-ASSISTED SURVEILLANCE.
- UAV SENSOR, TO DETECT UNAUTHORIZED DRONE FLIGHTS IN THE AREA.
- WIRELESS SENSORS, TO DETECT INTRUSIONS IN THE VICINITY.
- WIFI/BLEETOOTH SENSOR, TO DETECT WIRELESS DEVICES IN THE AREA.
- TWO-WAY COMMUNICATION, TO INSTRUCT UNAUTHORIZED PERSONS TO LEAVE.
- STROBE LIGHT, TO MARK INTRUSIONS AND DISRUPT UNAUTHORIZED PERSONS.
- SOUND BARRIER, TO FORCE UNAUTHORIZED PERSONS AWAY.
- THE MAST CAN CARRY UP TO 100 KG OF EQUIPMENT.
- COMMUNICATION LINK VIA 4G/5G OR STARLINK.

CCTV

AI-POWERED SURVEILLANCE

AI-ENABLED CAMERAS, FULLY INTEGRATED WITH THE CUSTOMER'S EXISTING CCTV SOLUTION, ALLOW SKYTOWER TO AUTOMATICALLY DETECT AND ALERT WHEN INDIVIDUALS OR VEHICLES ENTER THE AREA.

SEAMLESS INTEGRATION

CAMERA BRAND AND TYPE ARE ADAPTED TO MATCH THE CUSTOMER'S EXISTING CCTV SYSTEM, ENSURING FULL COMPATIBILITY AND SMOOTH INTEGRATION.

EXTENDED COVERAGE, REDUCED COST

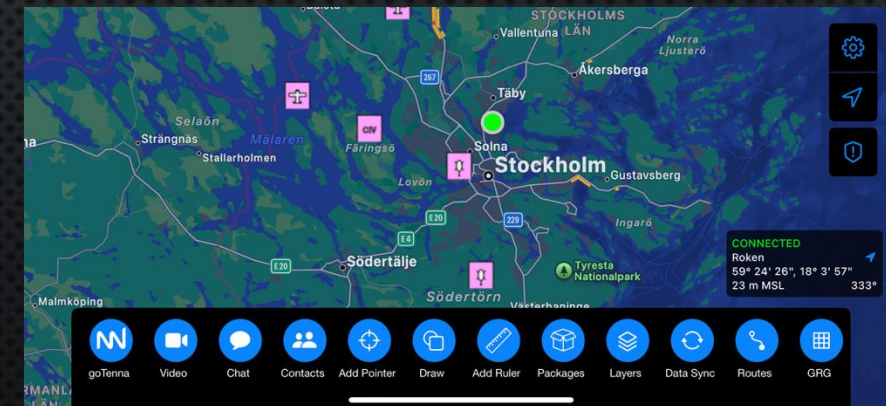
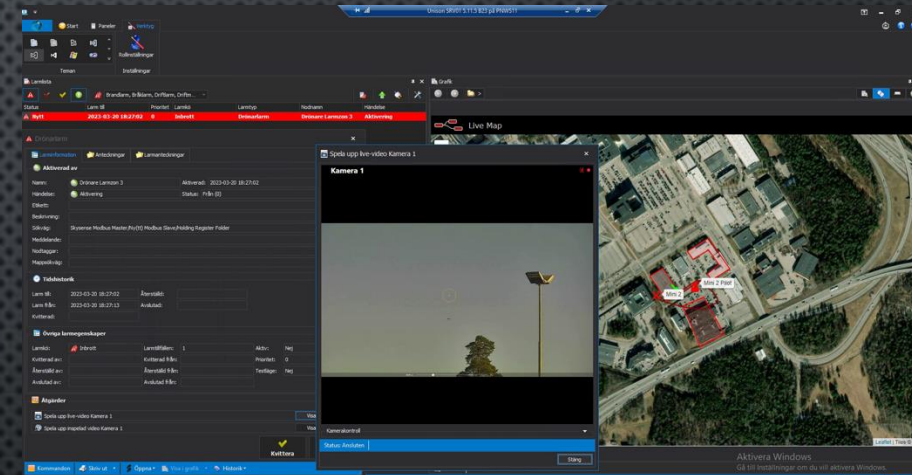
WITH ITS TELESCOPIC MAST, SKYTOWER PROVIDES WIDER CCTV COVERAGE THAN STANDARD INSTALLATIONS. THIS ENABLES CONTINUOUS SURVEILLANCE AT A FRACTION OF THE COST OF TRADITIONAL SECURITY GUARDS.



UAV-DETECTION

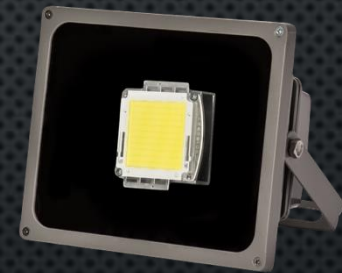
SWEDISH COMPANY SKYSENSE AB HAS DEVELOPED A CUTTING-EDGE SOLUTION FOR DETECTING AND LOCATING COMMERCIAL UAVS AND THEIR OPERATORS.

- **PASSIVE TECHNOLOGY:** THE SYSTEM IS COMPLETELY PASSIVE, ENSURING DISCREET OPERATION, AND CAN BE DEPLOYED IN BOTH FIXED INSTALLATIONS AND MOBILE PLATFORMS.
- **POWERFUL COVERAGE:** A SINGLE SENSOR PROVIDES A 360° DETECTION RANGE OF UP TO 2 KM, OR A DIRECTIONAL 60° RANGE OF UP TO 8 KM.
- **SCALABLE ARCHITECTURE:** MULTIPLE SENSORS CAN BE NETWORKED AND MANAGED FROM A SINGLE SOC.
- **OPERATIONAL INTEGRATION:** FULLY INTEGRATED WITH TAK, DELIVERING INSTANT SITUATIONAL AWARENESS TO ALL CONNECTED PERSONNEL AND STREAMLINING COMMUNICATION DURING OPERATIONS.
- **FLEXIBLE COMPATIBILITY:** CAN BE SEAMLESSLY INTEGRATED WITH CCTV SYSTEMS AND OTHER ALARM SOLUTIONS.



AUDIOVISUAL DETERRENCE

- **INFERNO MAXI:** A DIRECTED ACOUSTIC DEVICE WITH AN EFFECTIVE RANGE OF 25 METERS. GENERATING 149 dB AT 1 METER, IT MAKES IT IMPOSSIBLE FOR INDIVIDUALS TO REMAIN IN THE AREA. ONE BASE UNIT CAN POWER TWO SPEAKERS FOR OPTIMAL COVERAGE.
- **INFERNO STROBOCOP:** ACTS AS BOTH A DETERRENT AND A DISORIENTATION TOOL. FOUR UNITS PROVIDE COMPLETE 360° COVERAGE.
- **STROBE LIGHTS:** ADDITIONAL STROBE UNITS CAN BE DEPLOYED TO DETER UNAUTHORIZED PRESENCE AND SIGNAL INDIVIDUALS TO DISPERSE.
- **TWO-WAY COMMUNICATION:** SKYTOWER CAN BE EQUIPPED WITH LOUDSPEAKERS AND MICROPHONES, ALLOWING OPERATORS TO DIRECTLY ADDRESS INDIVIDUALS IN THE VICINITY.



THEMAX AB

CONTACT:

WWW.THEMAX.TECH

INFO@THEMAX.TECH

+46 704 28 74 74